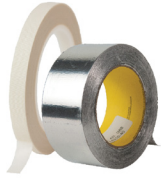


HEATING CABLE ACCESSORIES

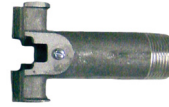
Heating Cable Accessories



Adhesive Tape

Adhesive tape used for mounting heating cable.

Part No.	Description
PSAT36A	Standard Fiberglass Tape Suitable for General Purpose Applications Size: 0.5 in x 108 ft (13 mm x 38 m) Silicone Adhesive Temp Limit: 392°F (200°C)
AAT25	Standard Aluminum Tape Suitable for General Purpose Applications Size: 2.5 in x 180 ft (64 mm x 55 m) Acrylic Adhesive w/Liner Temp Limit: 305°F (152°C)
AAT260	Extra-Strength Aluminum Tape Enhanced Durability and Adhesion for More Rigorous Applications Size: 2 in x 180 ft (51 mm x 55 m) Acrylic Adhesive Temp Limit: 300°F (149°C)
AAT2180	High Temperature Aluminum Tape Designed for applications above 392°F (200°C) Size: 2 in x 180 ft (51 mm x 55 m) Silicone Adhesive w/Liner Temp Limit: 500°F (260°C)



Pipe Standoff

Aluminum standoff for mounting junction boxes to pipe.

Part No.	Description
PSOCAB075	3/4 in NPT thread
PSOCAB010	1 in NPT thread



Pipe Strap

Stainless steel pipe straps used to secure pipe standoff to pipe.

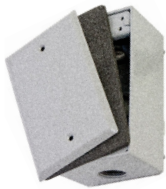
Part No.	Description
BPSCAB2-6	Adjustable from: 2 in to 6 in (51mm to 152mm)



RTV Sealant

Silicone sealant used to seal lead pouches, end pouches, and pipe standoffs.

Part No.	Description
RTV3.0	3 oz. (89 ml)



Junction Box

Metallic enclosure with watertight cover. Suitable for ordinary locations. NEMA 3R rated for indoor/outdoor use.

File No. 195978 File No. C22.2 No. 18

Part No.	Description
JBM050	Metallic Box 3 hub 1/2 in NPT Dimensions: 2 in x 4-1/2 in x 2-3/4 in (51 mm x 114 mm x 70 mm)
JBM075	Metallic Box 3 hub 3/4 in NPT Dimensions: 2 in x 4-1/2 in x 2-3/4 in (51 mm x 114 mm x 70 mm)
JBM100	Metallic Box 3 hub 1 in NPT Dimensions: 2-5/8 in x 4-1/2 in x 2-3/4 in (67 mm x 114 mm x 70 mm)



Monitor Light Kit

Provides an LED end of circuit continuity indication for all types of heating cable. Suitable for ordinary locations. NEMA 3R rated for outdoor/wet area use.

Part No.	Description
MLK1001	120 V LED
MLK2001	240 V LED

Note: Lead termination kit required.
For SL series cables use SLCABLP
For FE series cables use FECABLP
For KE, KK, and KM series cables use KCABLP



Hazardous Location Junction Box

Metallic enclosure with watertight explosion proof cover. Suitable for hazardous locations. C1 D1 NEMA 4x rated for indoor/outdoor use.



Part No.	Description
JBH075	Metallic box 7 hub 3/4 in NPT Dimensions: 3-1/2 in x 4-5/8 in x 4-5/8 in (89 mm x 117 mm x 117 mm)
JBH100	Metallic box 7 hub 1 in NPT Dimensions: 3-1/2 in x 4-5/8 in x 4-5/8 in (89 mm x 117 mm x 117 mm)



Heat Conductive Putty

Used to fill voids between cable and pipe surface.

Part No.	Description
HCP1	Size: 1 lb. (0.5 kg)
HCP3	Size: 3 lb. (1.4 kg)



**Electrical Tracing
Caution Label**

Recommended for every 10 ft (3 m) of heat trace.

Part No.	Description
BCLCAB	Caution label (English)
BCLCAB-DE	Caution label (Deutsch)
BCLCAB-ES	Caution label (Español)
BCLCAB-FR	Caution label (Frances)
BCLCAB-IT	Caution label (Italiano)